



Kaufhaus Bozen
 Rahmenterminplan / Cronoprogramma



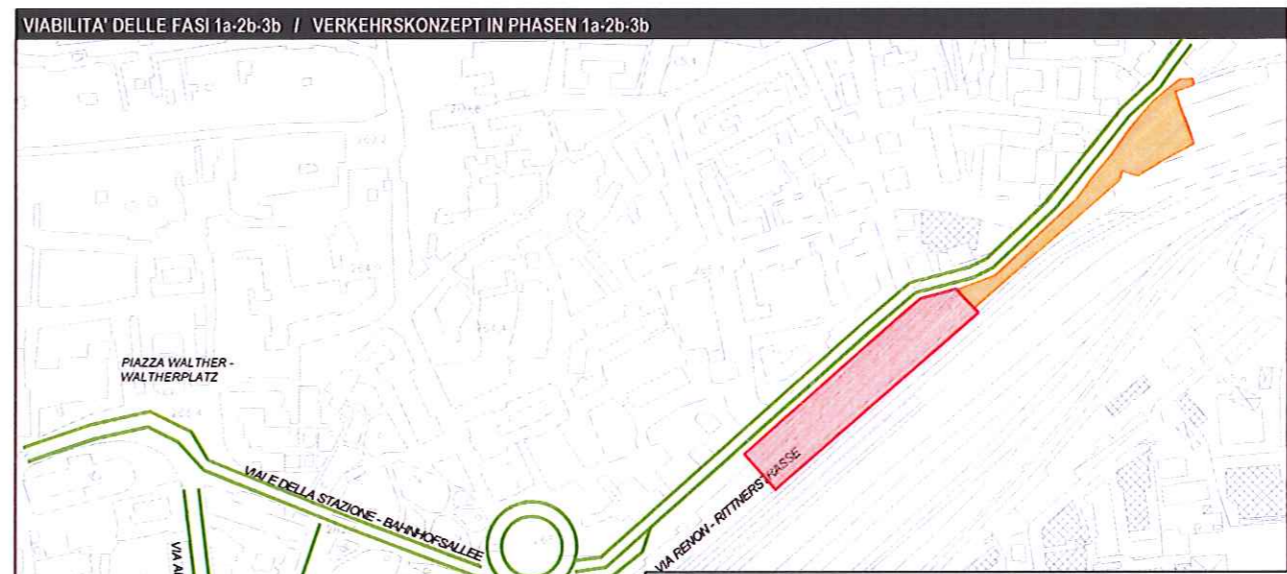
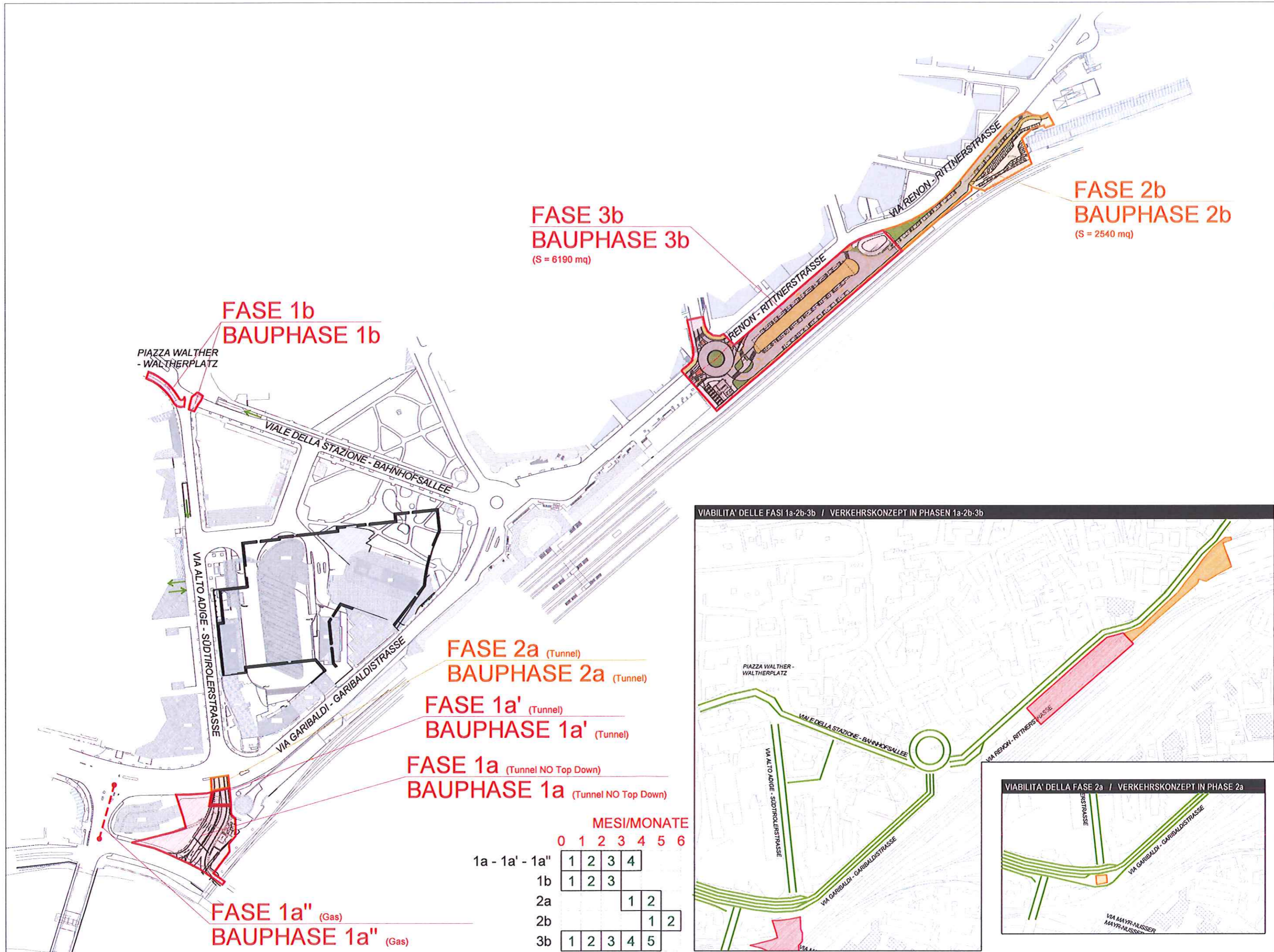
	2013	2014	2015	2016	2017	2018	2019
Vorplanung und Genehmigungen	[Bar chart: 2013-2014]		←				
Progettazione preliminare e processi autorizzativi	[Bar chart: 2013-2014]						
Ausführungsplanung /Progettazione esecutiva			[Bar chart: 2015-2016]				
Bindung Ankermieter / vincolo noleggio ancoraggi							
Busbahnhof Planung+Ausschreibung			[Bar chart: 2015]				
Progettazione Stazione autocorriere + gara							
Baukonzession Busbahnhof			X				
Concessione edilizia stazione autocorriere							
Busbahnhof Ausführung			[Bar chart: 2015]	→			
Esecuzione lavori stazione autocorriere							
Baukonzession weiteres Infrastrukturprojekt				X			
Concessione edilizia altre infrastrutture							
Umsetzung weiteres Infrastrukturprojekt					[Bar chart: 2016-2017]	[Bar chart: 2018-2019]	
Realizzazione progetto infrastrutture							
Ausweidlösung Handelskammer			[Bar chart: 2015]				
Soluzione transitoria Camera di Commercio							
Baukonzession Abbruch+Baugrube				X			
Concessione edilizia demolizione e scavo							
Abbruch und Baugrube / Demolizione e scavo				[Bar chart: 2016]			
Baukonzession Hochbau / Concessione edilizia edificazioni				X			
Hochbau / edificazione					[Bar chart: 2016-2018]		
Mieterausbau / Locazioni						[Bar chart: 2018-2019]	
Gesamtinbetriebnahme/Eröffnung							→ Eröffnung 03/2019
Avvio attività generale/Inaugurazione							→ Apertura 03/2019

Kaufhaus Bozen Cronoprogramma-Terminkonzept

Nr.	Vorgangsname ital	Vorgangsname	Dauer	Anfang	Ende	2015												2016												2017												2018												2019			
						Sep	Okt	Nov	Dez	Jan	Feb	Mrz	Apr	Mai	Jun	Jul	Aug	Sep	Okt	Nov	Dez	Jan	Feb	Mrz	Apr	Mai	Jun	Jul	Aug	Sep	Okt	Nov	Dez	Jan	Feb	Mrz	Apr	Mai	Jun	Jul	Aug	Sep	Okt	Nov	Dez	Jan	Feb	Mrz	Apr								
1	Progettazione preliminare e approvazione	Vorplanung und Genehmigungen	130 Wochen	01/01/13	29/06/15	[Timeline bar from 01/01/13 to 29/06/15]																																																			
2	Progettazione esecutiva	Ausführungsplanung	52 Wochen	01/07/15	28/06/16	[Timeline bar from 01/07/15 to 28/06/16]																																																			
3	Vincolazione locatori principali	Bindung Ankermieter	39,8 Wochen	30/03/15	31/12/15	[Timeline bar from 30/03/15 to 31/12/15]																																																			
4	Lavori preparativi	Vorbereitende Maßnahmen	52,2 Wochen	05/01/15	04/01/16	[Timeline bar from 05/01/15 to 04/01/16]																																																			
5	Stazione autocorriere temporanea	Temporärer Busbahnhof	52,2 Wochen	05/01/15	04/01/16	[Timeline bar from 05/01/15 to 04/01/16]																																																			
6	Progettazione e appalto	Planung und Ausschreibung	30 Wochen	05/01/15	31/07/15	[Timeline bar from 05/01/15 to 31/07/15]																																																			
7	Liberaione areale RFI	Grundfreimachung RFI				[Timeline bar from 05/01/15 to 31/07/15]																																																			
8	Demolizione edificio esistente e costruzione stazione autocorriere	Abbruch Bestandsgebäude und Bau Busbahnhof	22 Wochen	03/08/15	01/01/16	[Timeline bar from 03/08/15 to 01/01/16]																																																			
9	Messa in funzione stazione autocorriere	Inbetriebnahme Busbahnhof	0,2 Wochen	04/01/16	04/01/16	[Timeline bar from 04/01/16 to 04/01/16]																																																			
10	Dislocamenti	Aussiedlungen	13,6 Wochen	29/09/15	31/12/15	[Timeline bar from 29/09/15 to 31/12/15]																																																			
11	Soluzione temporanea Ex-camera di commercio	Ausweichlösung Alte Handelskammer	13,6 Wochen	29/09/15	31/12/15	[Timeline bar from 29/09/15 to 31/12/15]																																																			
12	Dislocamento areale (Shop, bar)	Aussiedlung aller Nutzungen am Areal (Shops, Cafes)	4,4 Wochen	02/12/15	31/12/15	[Timeline bar from 02/12/15 to 31/12/15]																																																			
13	Inizio lavori di costruzione KHB	Baubeginn Bauarbeiten KHB	1 Tag	04/01/16	04/01/16	[Timeline bar from 04/01/16 to 04/01/16]																																																			
14	Lavori di demolizione	Abbrucharbeiten	8,8 Wochen	05/01/16	04/03/16	[Timeline bar from 05/01/16 to 04/03/16]																																																			
15	Demolizione stazione autocorriere	Abbruch Gebäude Busbahnhof	4,2 Wochen	05/01/16	02/02/16	[Timeline bar from 05/01/16 to 02/02/16]																																																			
16	Demolizione Hotel Alpi	Abbruch Hotel Alpi	8 Wochen	05/01/16	29/02/16	[Timeline bar from 05/01/16 to 29/02/16]																																																			
17	Demolizione Ex Camera di Commercio	Abbruch Alte Handelskammer	8,8 Wochen	05/01/16	04/03/16	[Timeline bar from 05/01/16 to 04/03/16]																																																			
18	Scavo	Baugrube	32 Wochen	07/03/16	14/10/16	[Timeline bar from 07/03/16 to 14/10/16]																																																			
19	Palificazioni, sottomurazioni	Baugrubensicherung, Unterfangungen	18 Wochen	07/03/16	08/07/16	[Timeline bar from 07/03/16 to 08/07/16]																																																			
20	Scavi	Aushub	18 Wochen	13/06/16	14/10/16	[Timeline bar from 13/06/16 to 14/10/16]																																																			
21	Costruzione grezza	Rohbau	90 Wochen	17/10/16	06/07/18	[Timeline bar from 17/10/16 to 06/07/18]																																																			
22	Finiture	Ausbau	80 Wochen	26/06/17	04/01/19	[Timeline bar from 26/06/17 to 04/01/19]																																																			
23	Impianti	Technik	80 Wochen	26/06/17	04/01/19	[Timeline bar from 26/06/17 to 04/01/19]																																																			
24	Acquisizione locatori	Mieterausbau	26 Wochen	09/07/18	04/01/19	[Timeline bar from 09/07/18 to 04/01/19]																																																			
25	Progetto fluviale	Flussbauwerk	22 Wochen	21/04/17	21/09/17	[Timeline bar from 21/04/17 to 21/09/17]																																																			
26	Esecuzione progetto delle infrastrutture	Umsetzung weiteres Infrastrukturprojekt	152 Wochen	04/01/16	30/11/18	[Timeline bar from 04/01/16 to 30/11/18]																																																			
27	Fase 1 - galleria	Bauphase 1 - Tunnel	17 Wochen	04/01/16	29/04/16	[Timeline bar from 04/01/16 to 29/04/16]																																																			
28	Fase 1a - Portale lato Mayr-Nusser (No Top Down)	Bauphase 1a - Portal (No Top Down)	17 Wochen	04/01/16	29/04/16	[Timeline bar from 04/01/16 to 29/04/16]																																																			
29	Fase 1b Adattamento entrata garage Walther	Bauphase 1b Adaption Einfahrt Walthergarage	13 Wochen	04/01/16	01/04/16	[Timeline bar from 04/01/16 to 01/04/16]																																																			
30	Fase 2 - Tunnel zona d'entrata	Bauphase 2 - Tunnel Einfahrtsbereich	12 Wochen	04/04/16	24/06/16	[Timeline bar from 04/04/16 to 24/06/16]																																																			
31	Fase 2a - Piazza Verdi, parte 1a	Bauphase 2a - Verdlplatz Teil 1	8 Wochen	04/04/16	27/05/16	[Timeline bar from 04/04/16 to 27/05/16]																																																			
32	Fase 2b - via Renon	Bauphase 2b - Ritterstraße	8 Wochen	02/05/16	24/06/16	[Timeline bar from 02/05/16 to 24/06/16]																																																			
33	Fase 3 - Tunnel Via Alto Adige sud	Bauphase 3 - Tunnel Südtirolerstraße Süd	44 Wochen	04/01/16	04/11/16	[Timeline bar from 04/01/16 to 04/11/16]																																																			
34	Fase 3b - Tunnel Piazza Verdi/Via Alto Adige	Bauphase 3b - Tunnel Verdlplatz/Südtirolerstraße	22 Wochen	04/01/16	03/06/16	[Timeline bar from 04/01/16 to 03/06/16]																																																			
35	Fase 3a - Tunnel Piazza Verdi/Via Alto Adige	Bauphase 3a - Tunnel Verdlplatz/Südtirolerstraße	22 Wochen	06/06/16	04/11/16	[Timeline bar from 06/06/16 to 04/11/16]																																																			
36	Fase 3a' - Tunnel Piazza Verdi/Via Alto Adige	Bauphase 3a' - Tunnel Verdlplatz/Südtirolerstraße	4 Wochen	10/10/16	04/11/16	[Timeline bar from 10/10/16 to 04/11/16]																																																			
37	Fase 20 - Superfici Via Renon lotto 3	Bauphase 20 - Ritterstraße Teil 3	8 Wochen	06/06/16	29/07/16	[Timeline bar from 06/06/16 to 29/07/16]																																																			
38	Fase 21 - Superfici Via Renon lotto 4	Bauphase 21 - Ritterstraße Teil 4	4 Wochen	01/08/16	26/08/16	[Timeline bar from 01/08/16 to 26/08/16]																																																			
39	Fase 22 - Superfici Via Renon lotto 5	Bauphase 22 - Ritterstraße Teil 5	4 Wochen	29/08/16	23/09/16	[Timeline bar from 29/08/16 to 23/09/16]																																																			
40	Fase 23 - Superfici Via Renon lotto 6	Bauphase 23 - Ritterstraße Teil 6	4 Wochen	29/08/16	23/09/16	[Timeline bar from 29/08/16 to 23/09/16]																																																			
41	Fase 4 - Tunnel Via Alto Adige tratto centrale	Bauphase 4 - Tunnel Südtirolerstraße Mitte	17 Wochen	26/09/16	20/01/17	[Timeline bar from 26/09/16 to 20/01/17]																																																			
42	Fase 5 - Collegamento garage Camera di Comm.	Bauphase 5 - Tunnelanbindung Garage HK	8 Wochen	23/01/17	17/03/17	[Timeline bar from 23/01/17 to 17/03/17]																																																			
43	Fase 6 - Tunnel Via Alto Adige Nord	Bauphase 6 - Tunnel Südtirolerstraße Nord	8 Wochen	20/02/17	14/04/17	[Timeline bar from 20/02/17 to 14/04/17]																																																			
44	Fase 7 - Tunnel Via Alto Adige/Piazza Walther	Bauphase 7 - Tunnel Südtirolerstraße/Waltherplatz	13 Wochen	17/04/17	14/07/17	[Timeline bar from 17/04/17 to 14/07/17]																																																			
45	Fase 8 - Tunnel Completamenti	Bauphase 8 - Tunnel Vervollständigung	13 Wochen	15/05/17	11/08/17	[Timeline bar from 15/05/17 to 11/08/17]																																																			
46	Fase 8a - Collegamento garage Walther	Bauphase 8a - Tunnelanbindung Walthergarage	8 Wochen	19/06/17	11/08/17	[Timeline bar from 19/06/17 to 11/08/17]																																																			
47	Fase 8b - Completamento Tunnel zona portale	Bauphase 8b - Komplettierung Tunnel Bereich Portal	13 Wochen	15/05/17	11/08/17	[Timeline bar from 15/05/17 to 11/08/17]																																																			
48	Fase 10 - Sottopassaggio bicli. via Mayr-Nusser	Bauphase 10 - Fahrradunterführung/Mayr-Nusserstraße	22 Wochen	14/08/17	12/01/18	[Timeline bar from 14/08/17 to 12/01/18]																																																			
49	Fase 10a - Sottopassaggio bici est	Bauphase 10a - Fahrradunterführung Ost	13 Wochen	14/08/17	10/11/17	[Timeline bar from 14/08/17 to 10/11/17]																																																			
50	Fase 10a' - Sottopassaggio bici est	Bauphase 10a' - Fahrradunterführung Ost	13 Wochen	18/09/17	15/12/17	[Timeline bar from 18/09/17 to 15/12/17]																																																			
51	Fase 10b - Corsia sud via Mayr-Nusser	Bauphase 10b - Fahrspur Süd Mayr-Nusserstraße	8 Wochen	20/11/17	12/01/18	[Timeline bar from 20/11/17 to 12/01/18]																																																			
52	Fase 11 - Piazza Verdi est/ via Mayr-Nusser	Bauphase 11 - Verdlplatz Ost/Mayr-Nusser-Straße	8 Wochen	15/01/18	09/03/18	[Timeline bar from 15/01/18 to 09/03/18]																																																			
53	Fase 12 - Superfici via Alto Adige sud	Bauphase 12 - Verkehrsflächen Südtirolerstraße	12 Wochen	15/01/18	06/04/18	[Timeline bar from 15/01/18 to 06/04/18]																																																			
54	Fase 12a - Superfici via Alto Adige centro	Bauphase 12a - Verkehrsflächen Südtirolerstraße Mitte	8 Wochen	15/01/18	09/03/18	[Timeline bar from 15/01/18 to 09/03/18]																																																			
55	Fase 12b - Superfici via Alto Adige sud	Bauphase 12b - Verkehrsflächen Südtirolerstraße Süd	8 Wochen	12/02/18	06/04/18	[Timeline bar from 12/02/18 to 06/04/18]																																																			
56	Bauphase 9 - Sottopassaggio biciclette e superfici p...	Bauphase 9 - Fahrradunterführung/Verdlplatz	13 Wochen	09/04/18	06/07/18	[Timeline bar from 09/04/18 to 06/07/18]																																																			
57	Fase 9a - Sottopassaggio ovest	Bauphase 9a - Fahrradunterführung West	13 Wochen	09/04/18	06/07/18	[Timeline bar from 09/04/18 to 06/07/18]																																																			
58	Fase 9b - Superfici Piazza Verdi ovest	Bauphase 9b - Verdlplatz West	8 Wochen	14/05/18	06/07/18	[Timeline bar from 14/05/18 to 06/07/18]																																																			
59	Fase 15 - Parco, via Perathoner e via Stazione Bahnhofsallee	Bauphase 15 - Park, Perathonerstr. Bahnhofsallee	21 Wochen	12/03/18	03/08/18	[Timeline bar from 12/03/18 to 03/08/18]																																																			
60	Fase 15a - Superf. via Perathoner +via Stazione	Bauphase 15a - Parathonerstr. + Bahnhofsallee	8 Wochen	12/03/18	04/05/18	[Timeline bar from 12/03/18 to 04/05/18]																																																			
61	Fase 15b - Parco stazione	Bauphase 15b - Park	17 Wochen	09/04/18	03/08/18	[Timeline bar from 09/04/18 to 03/08/18]																																																			
62	Fase 16 - Bahnhofspatz Süd	Bauphase 16 - Bahnhofspatz Süd	8 Wochen	07/05/18	29/06/18	[Timeline bar from 07/05/18 to 29/06/18]																																																			
63	Fase 17 - Bahnhofspatz West	Bauphase 17 - Bahnhofspatz West	12 Wochen	09/04/18	29/06/18	[Timeline bar from 09/04/18 to 29/06/18]																																																			
64	Fase 18 - Piazzale stazione nord, Via Renon	Bauphase 18 - Bahnhofspatz Nord, Ritterstraße	13 Wochen	09/04/18	06/07/18	[Timeline bar from 09/04/18 to 06/07/18]																																																			
65	Fase 18a - Superfici Piazza Stazione Nord	Bauphase 18a - Bahnhofspatz Nord	13 Wochen	09/04/18	06/07/18	[Timeline bar from 09/04/18 to 06/07/18]																																																			
66	Fase 18b - Superfici Via Renon lotto 1	Bauphase 18b - Ritterstraße Teil 1	13 Wochen	09/04/18	06/07/18	[Timeline bar from 09/04/18 to 06/07/18]																																																			
67	Fase 19 - Superfici Via Renon lotto 2	Bauphase 19 - Ritterstraße Teil 2	8 Wochen	14/05/18	06/07/18	[Timeline bar from 14/05/18 to 06/07/18]																																																			
68	Fase 13 - Piazza Verdi / Via Alto Adige	Bauphase 13 - Verdlplatz/Südtirolerstraße	16 Wochen	09/07/18	26/10/18	[Timeline bar from 09/07/18 to 26/10/18]																																																			
69	Fase 13a - Superfici piazza Verdi Nord	Bauphase 13a - Verdlplatz Nord	8 Wochen	09/07/18	31/08/18	[Timeline bar from 09/07/18 to 31/08/18]																																																			
70	Fase 13b - Superfici via Alto Adige nord	Bauphase 13b - Südtirolerstraße Nord	8 Wochen	03/09/18	26/10/18	[Timeline bar from 03/09/18 to 26/10/18]																																																			
71	Fase 14 - Superfici via Garibaldi	Bauphase 14 - Verkehrsflächen Garibaldistraße	13 Wochen	03/09/18	30/11/18	[Timeline bar from 03/09/18 to 30/11/18]																																																			

Legend:

- █ Vorgang
- █ Unterbrechung
- █ Meilenstein
- ▬ Sammelvorgang
- ▬ Projektsammelvorgang
- ◆ Inaktiver Vorgang
- ▬ Inaktiver Meilenstein
- ▬ Inaktiver Sammelvorgang
- ▬ Manueller Vorgang
- ▬ Nur Dauer
- ▬ Manueller Sammelvorgang
- ▬ Manueller Meilenstein
- ▬ Nur Anfang
- ▬ Nur Ende
- ▬ Externe Vorgänge
- ▬ Externer Meilenstein
- ▬ Manueller Fortschritt
- ▬ Stichtag
- ▬ In Arbeit



FASE 2a (Tunnel)
BAUPHASE 2a (Tunnel)

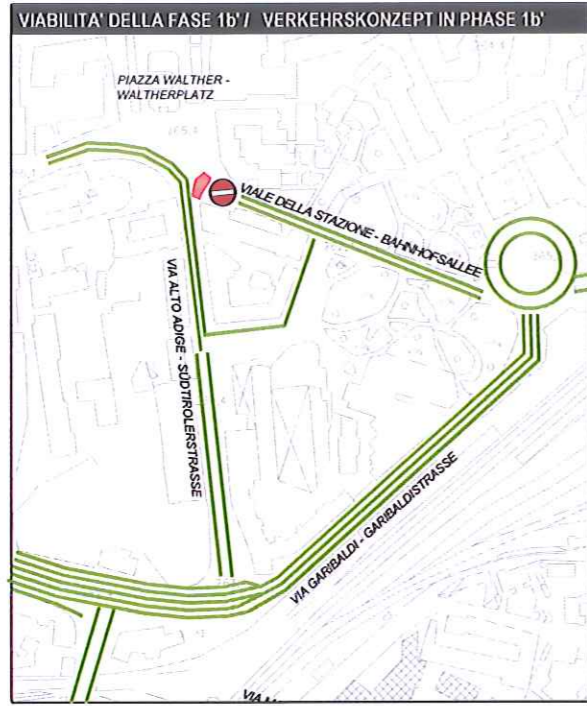
FASE 1a' (Tunnel)
BAUPHASE 1a' (Tunnel)

FASE 1a (Tunnel NO Top Down)
BAUPHASE 1a (Tunnel NO Top Down)

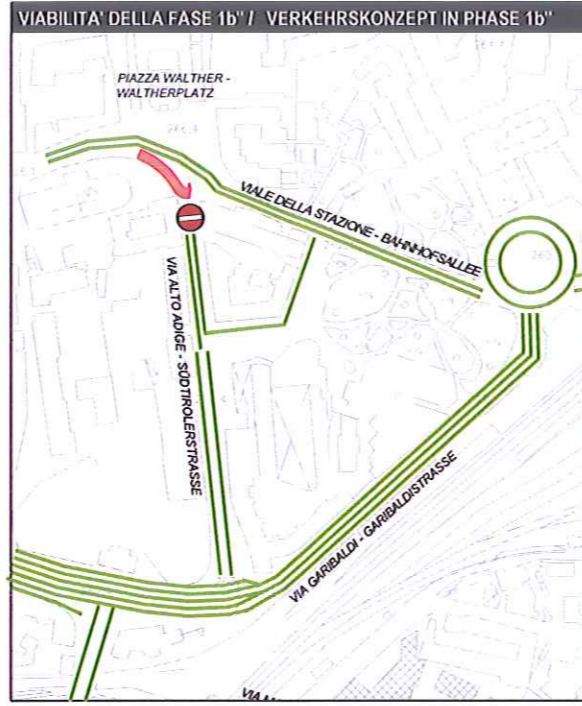
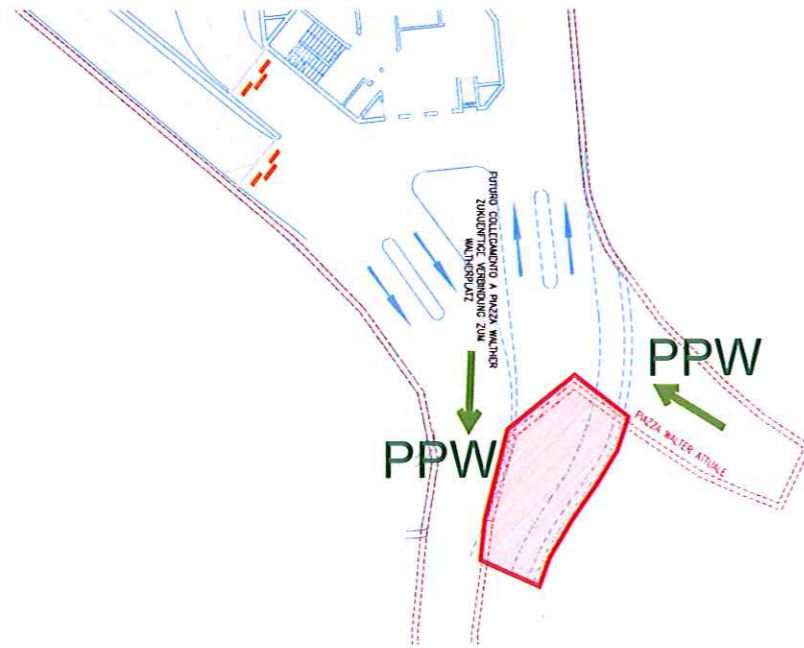
MESI/MONATE

	0	1	2	3	4	5	6
1a - 1a' - 1a''	1	2	3	4			
1b	1	2	3				
2a				1	2		
2b						1	2
3b	1	2	3	4	5		

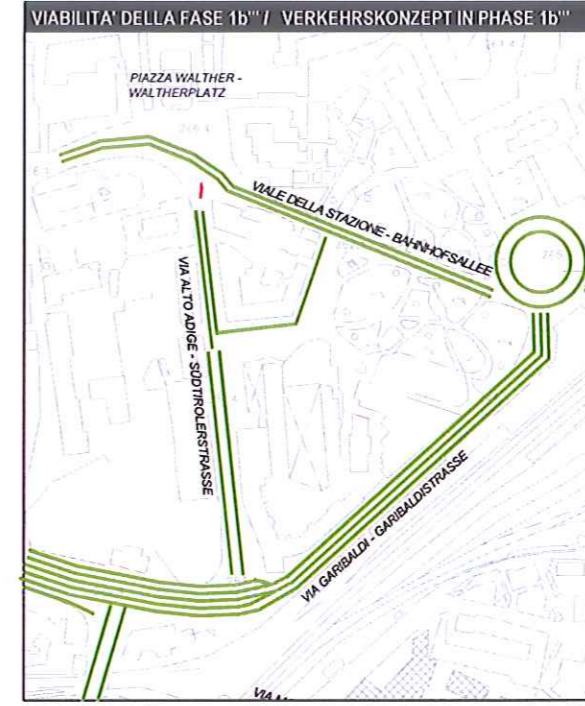
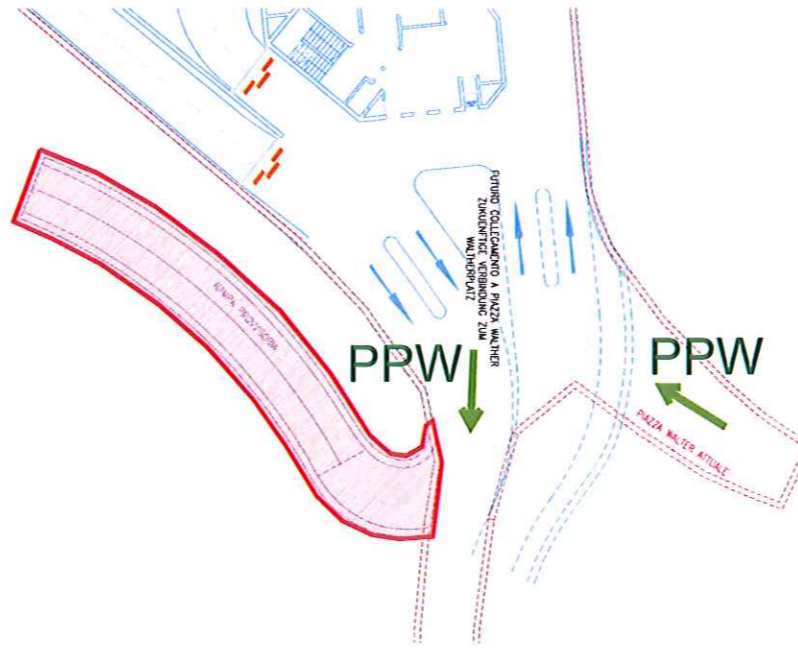
FASE 1a'' (Gas)
BAUPHASE 1a'' (Gas)



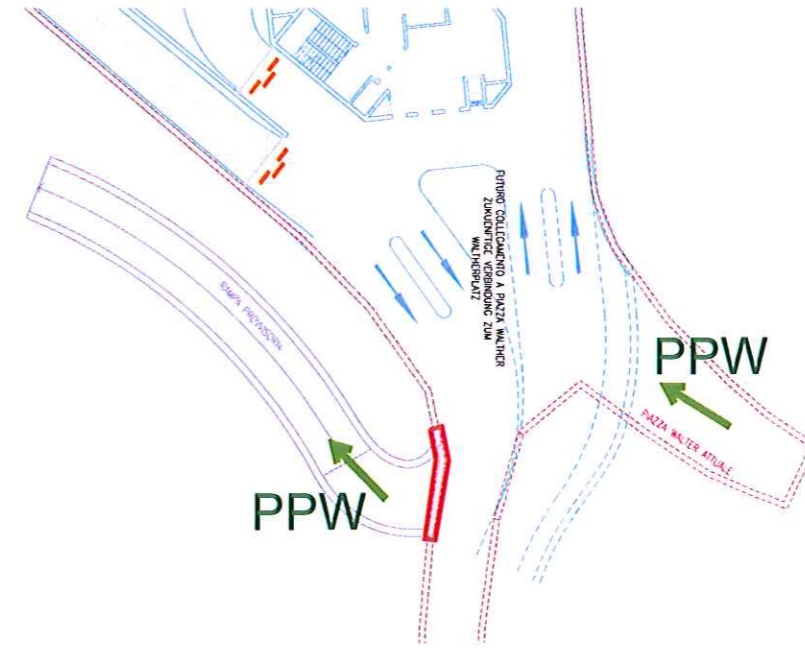
FASE 1b' (Tunnel)
BAUPHASE 1b' (Tunnel)

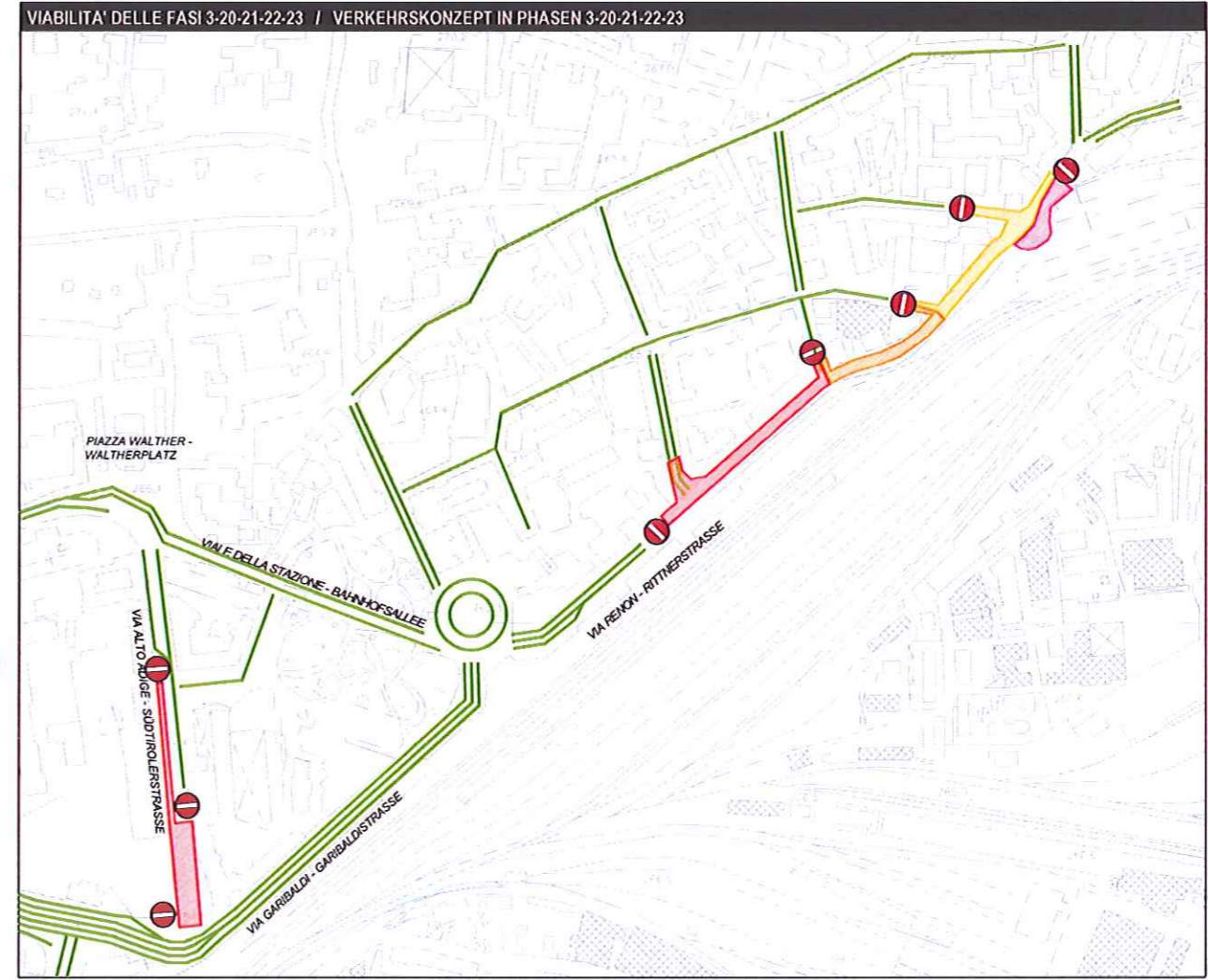
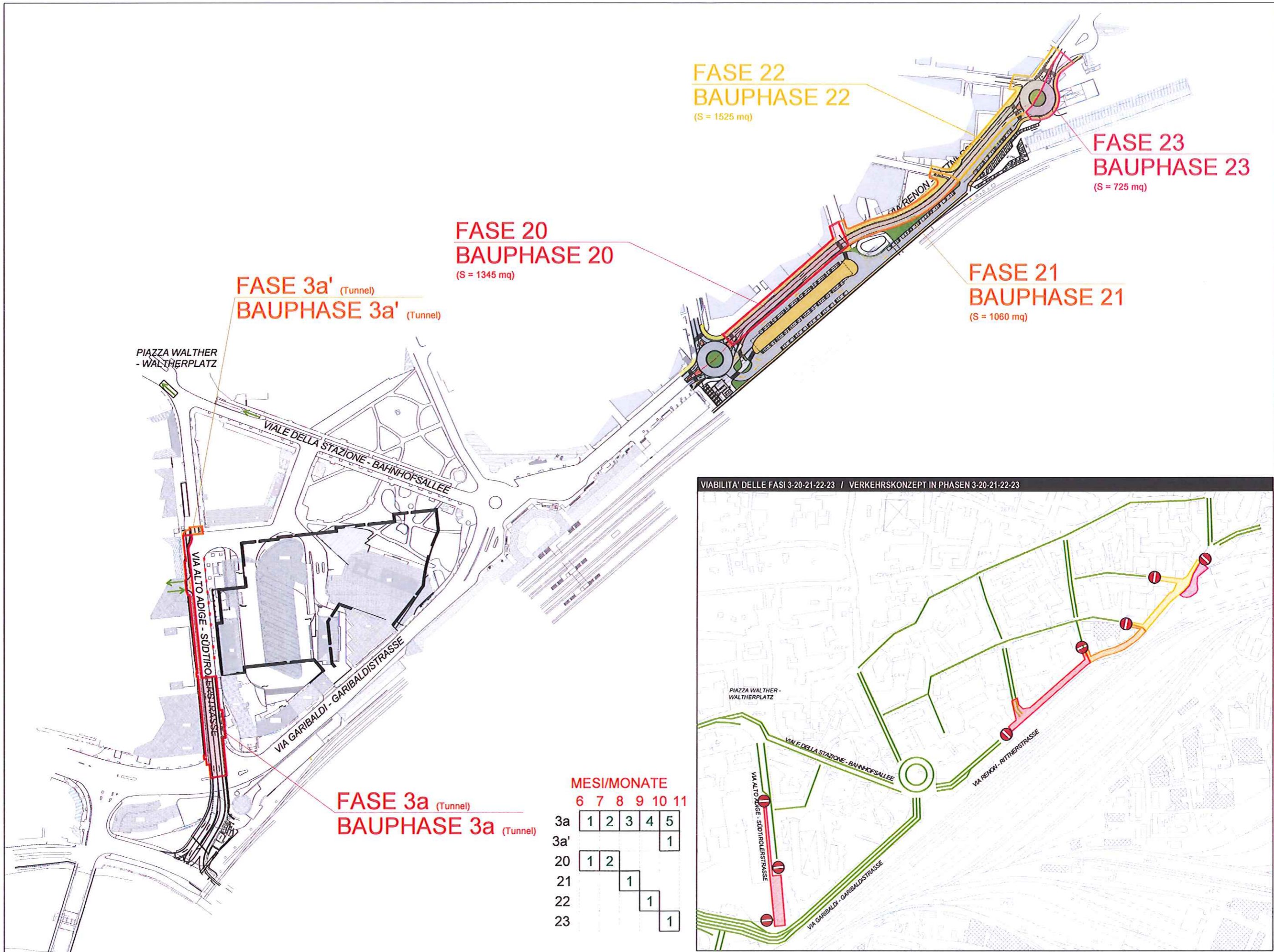


FASE 1b'' (Tunnel)
BAUPHASE 1b'' (Tunnel)



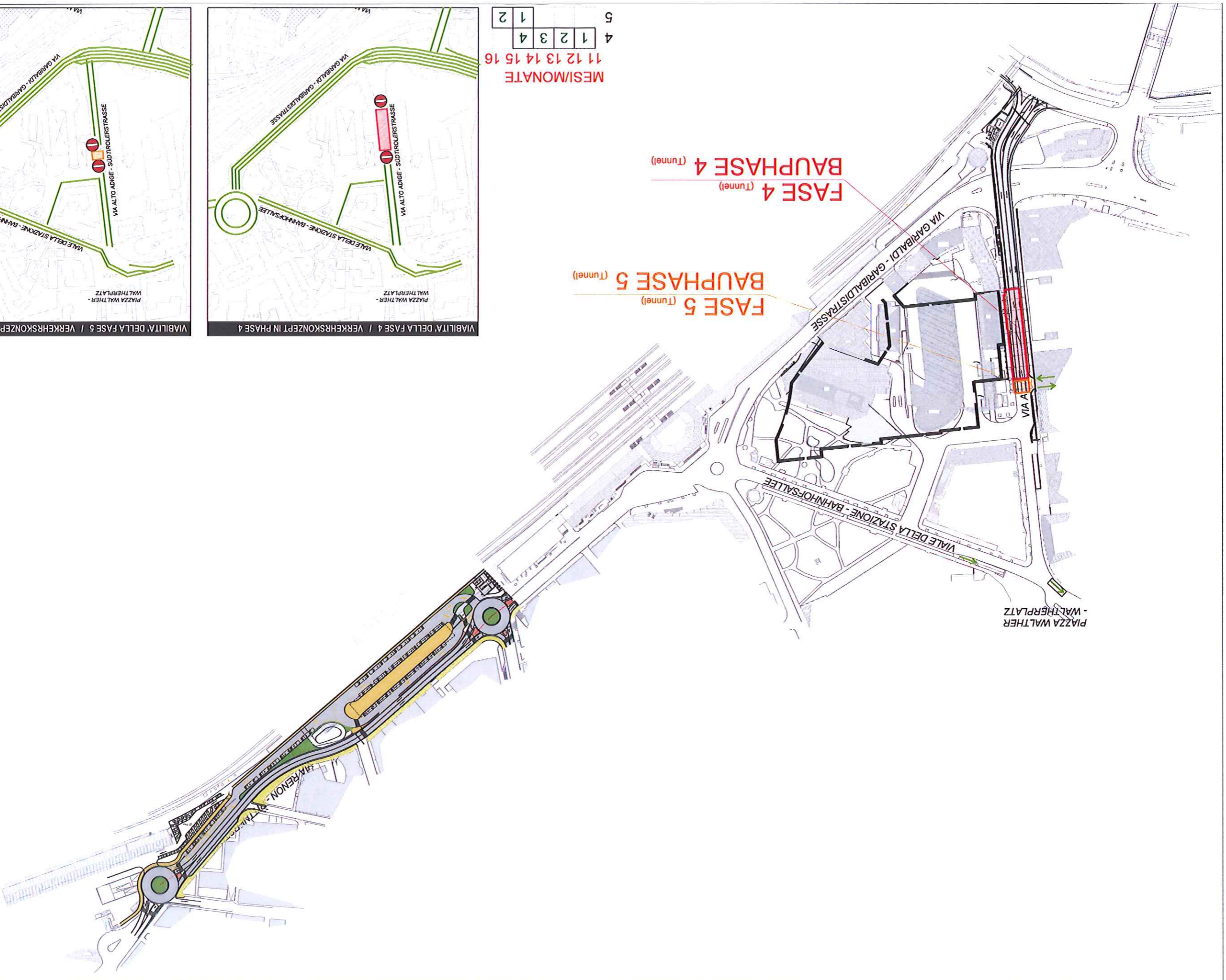
FASE 1b''' (Tunnel)
BAUPHASE 1b''' (Tunnel)





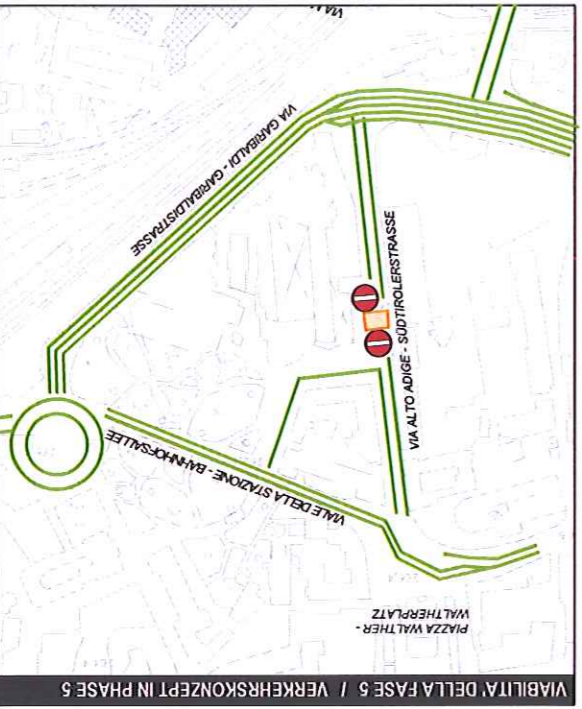
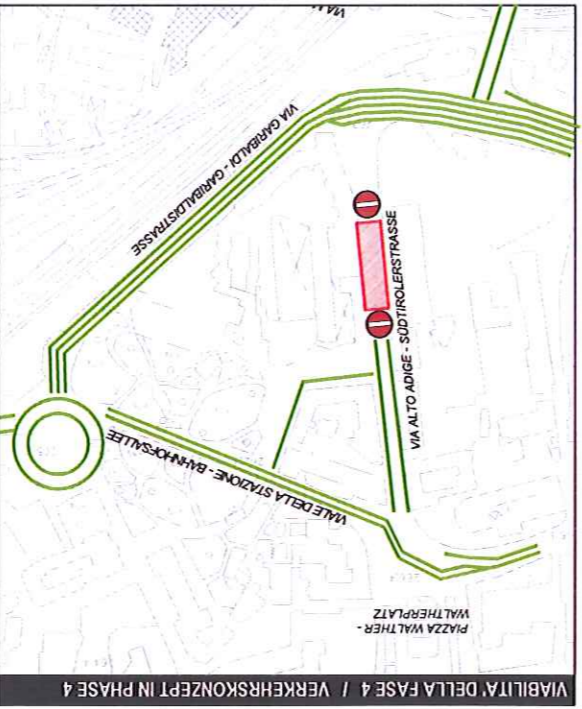
MESI/MONATE

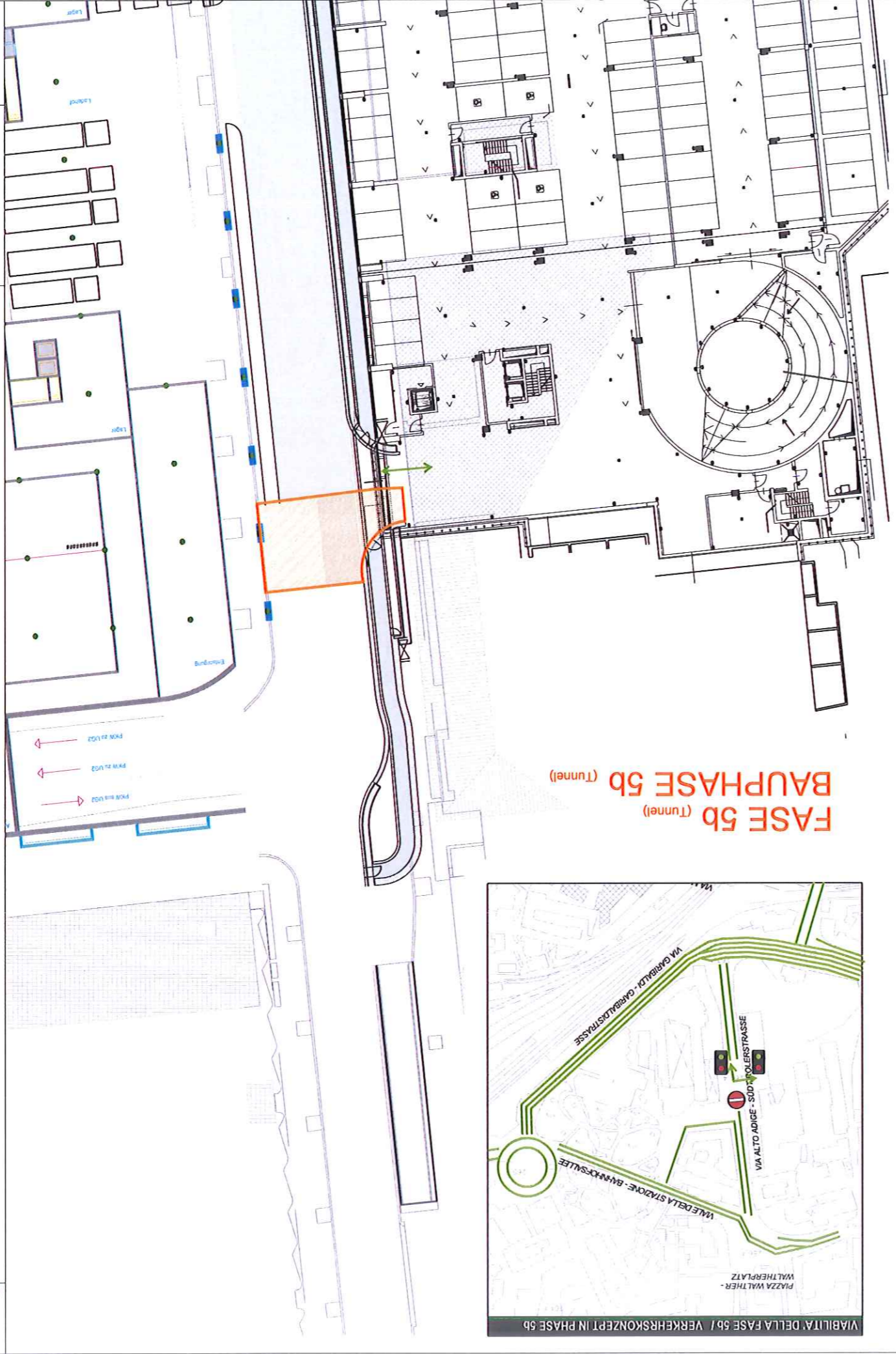
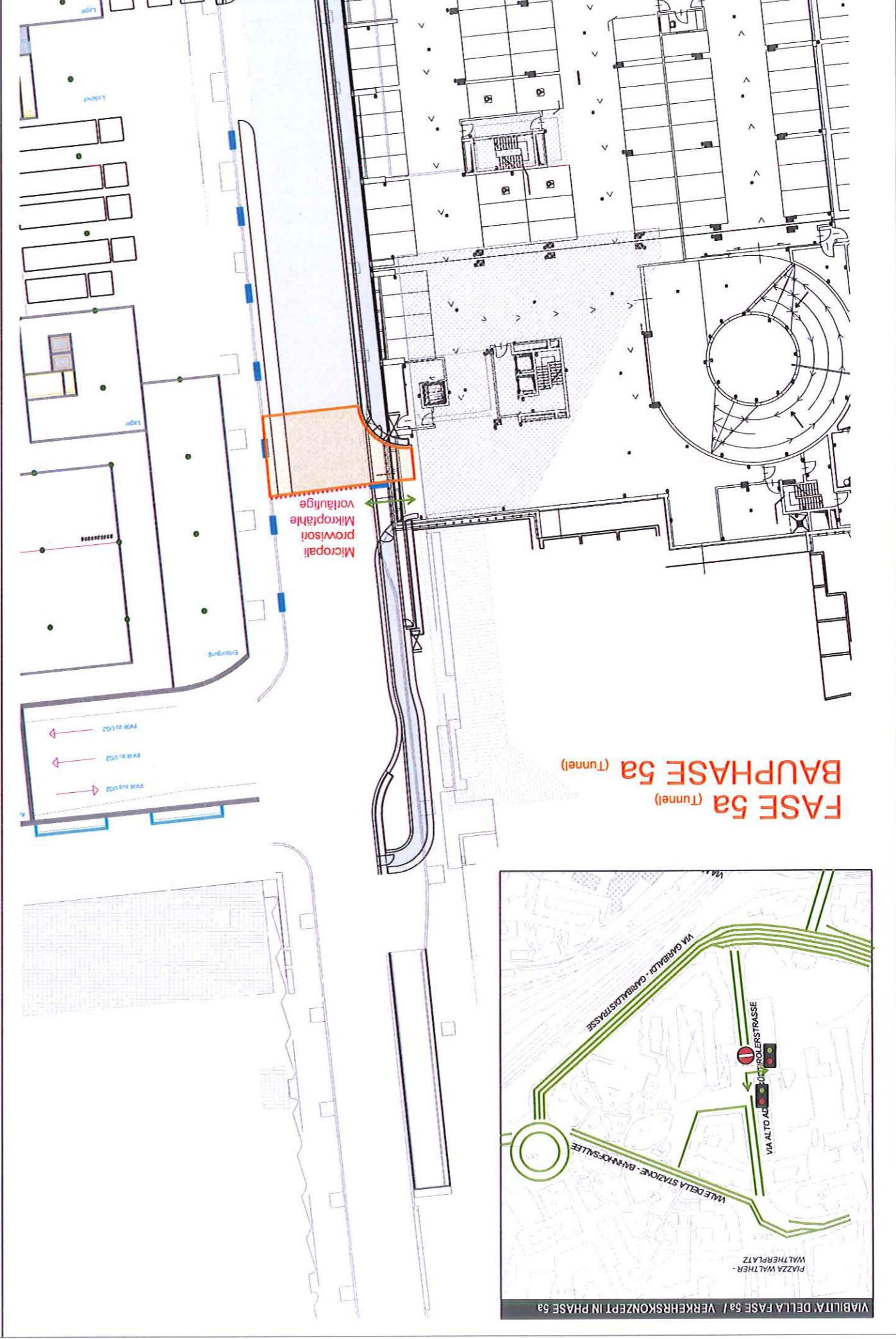
	6	7	8	9	10	11
3a	1	2	3	4	5	
3a'						1
20	1	2				
21			1			
22				1		
23						1

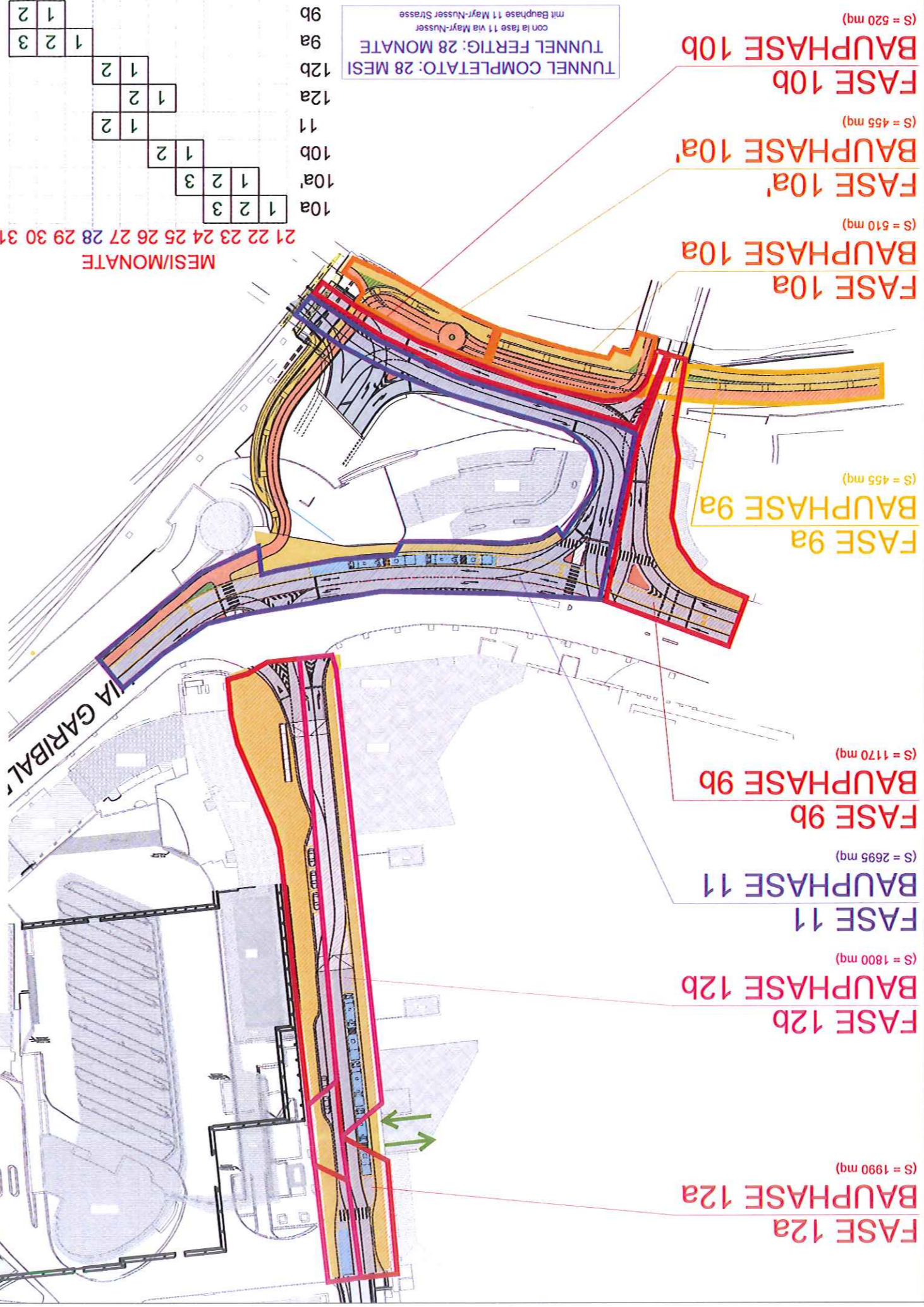


MESIMONATE

5
4
1 1 2 3 4
1 1 2 3 4 15 16







FASE 12a
BAUPHASE 12a (S = 1990 mq)

FASE 12b
BAUPHASE 12b (S = 1800 mq)

FASE 11
BAUPHASE 11 (S = 2695 mq)

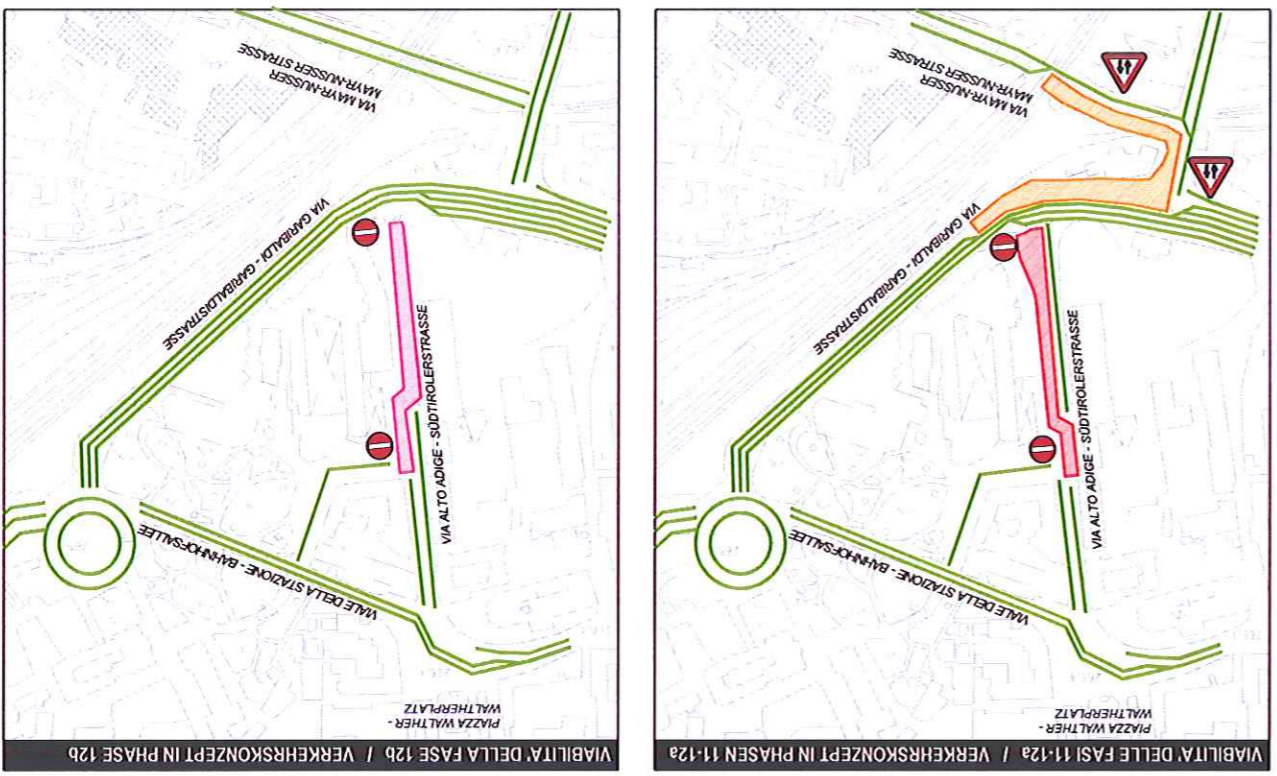
FASE 9b
BAUPHASE 9b (S = 1170 mq)

FASE 9a
BAUPHASE 9a (S = 455 mq)

FASE 10a
BAUPHASE 10a (S = 510 mq)

FASE 10a'
BAUPHASE 10a' (S = 455 mq)

FASE 10b
BAUPHASE 10b (S = 520 mq)



VIABILITA' DELLA FASE 9 / VERKEHRSKONZEPT IN PHASE 9

VIABILITA' DELLE FASI 11-12a / VERKEHRSKONZEPT IN PHASEN 11-12a

VIABILITA' DELLA FASE 10 / VERKEHRSKONZEPT IN PHASE 10

VIABILITA' DELLA FASE 12b / VERKEHRSKONZEPT IN PHASE 12b

