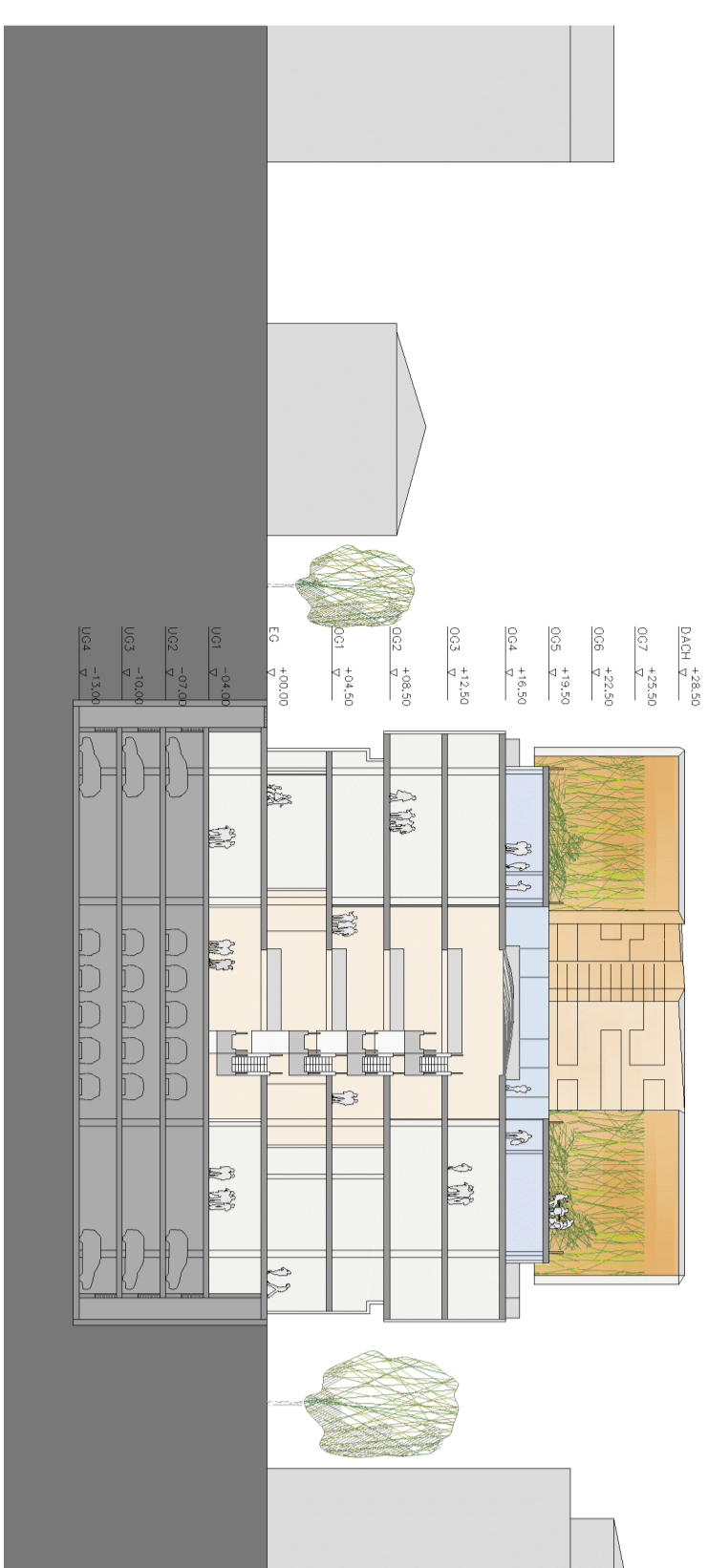
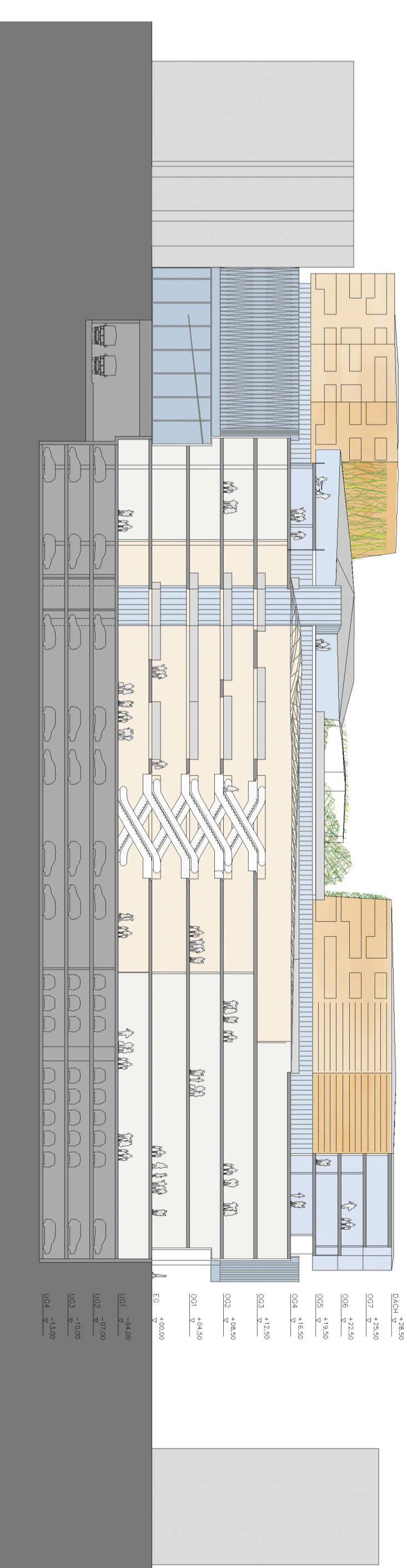
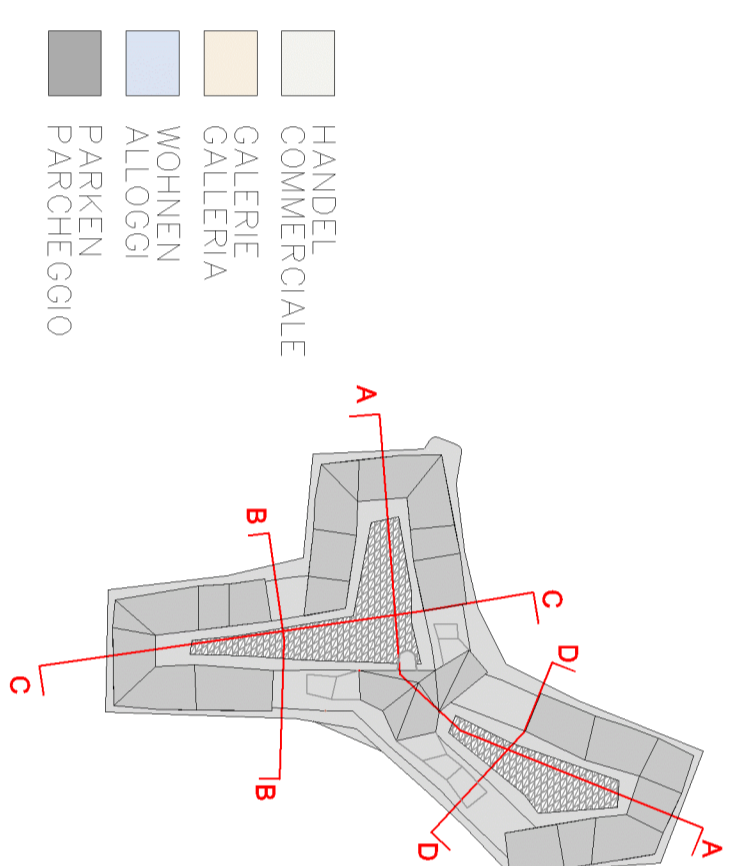


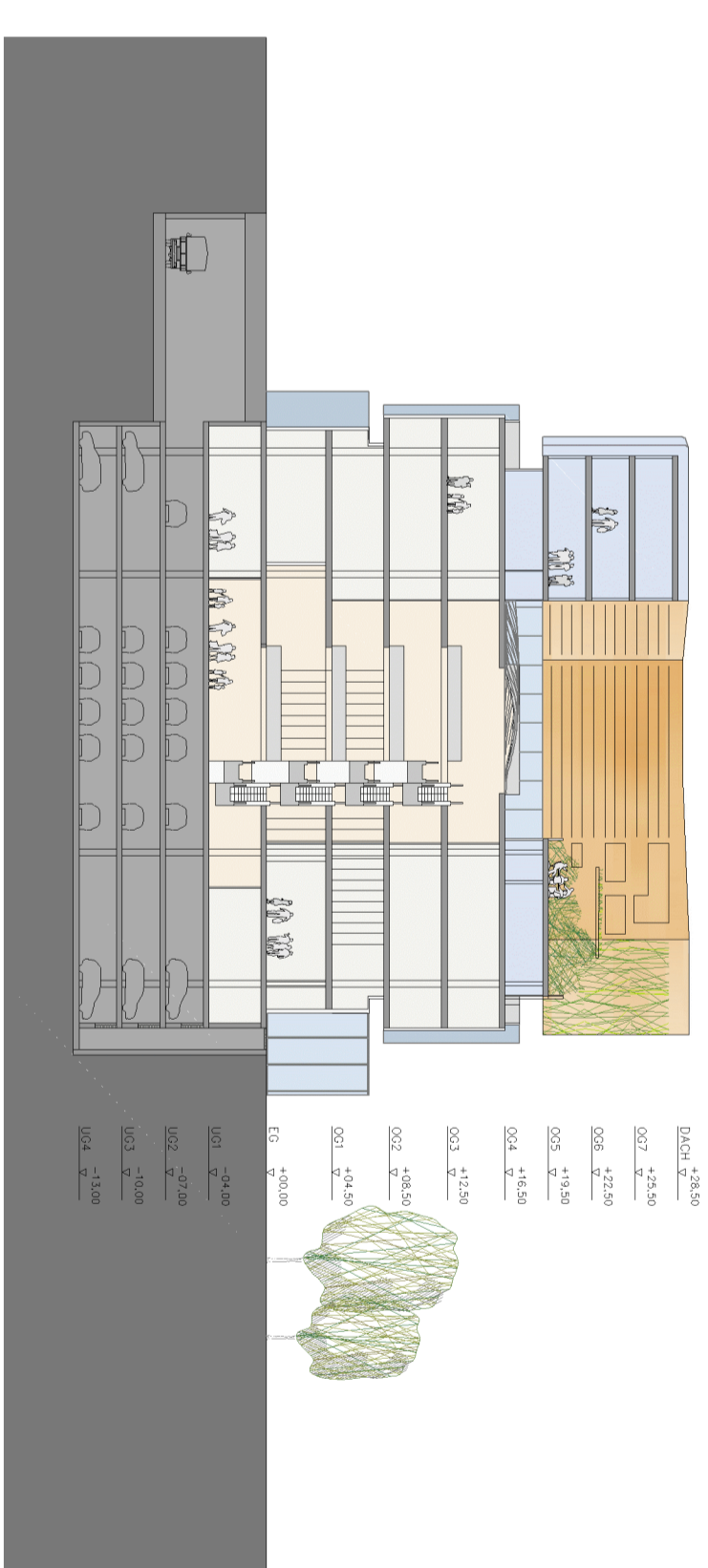
Schnitt AA
Sezione AA



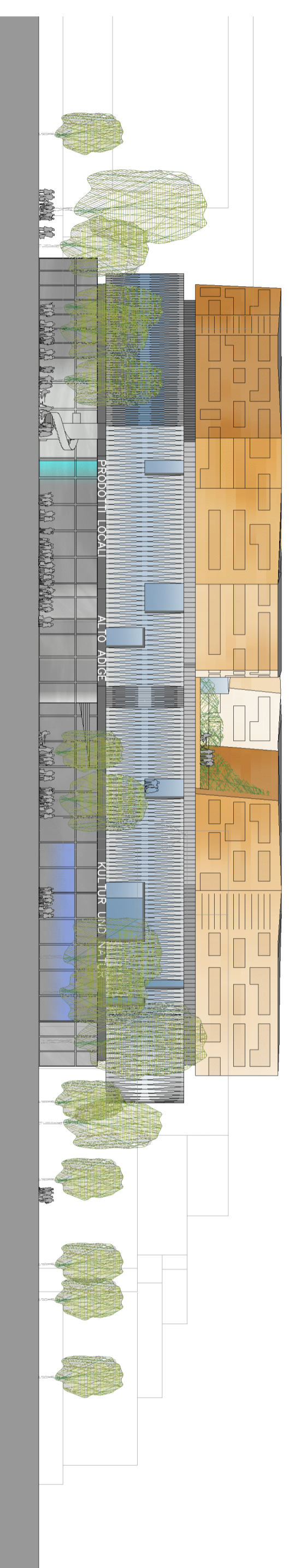
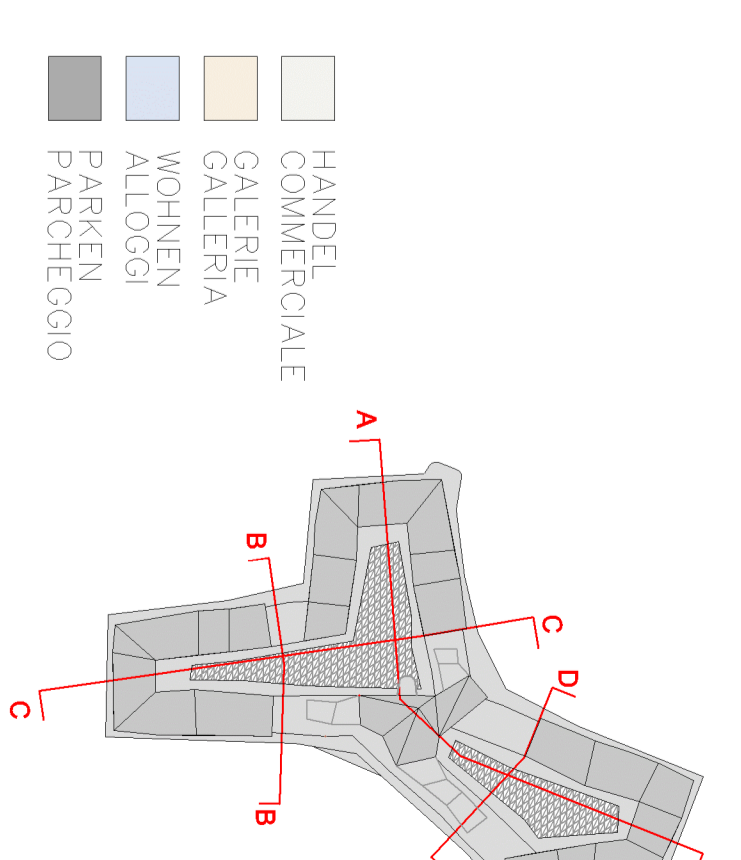
Schnitt BB
Sezione BB



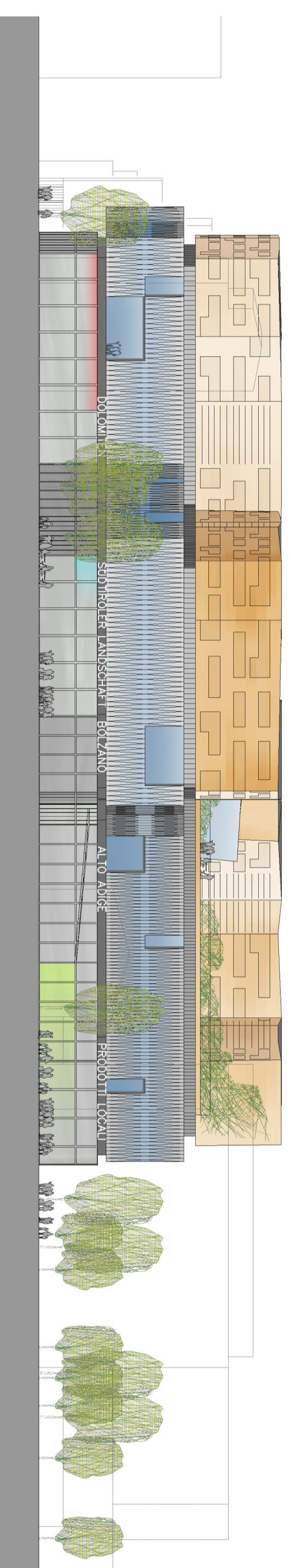
Schnitt CC
Sezione CC



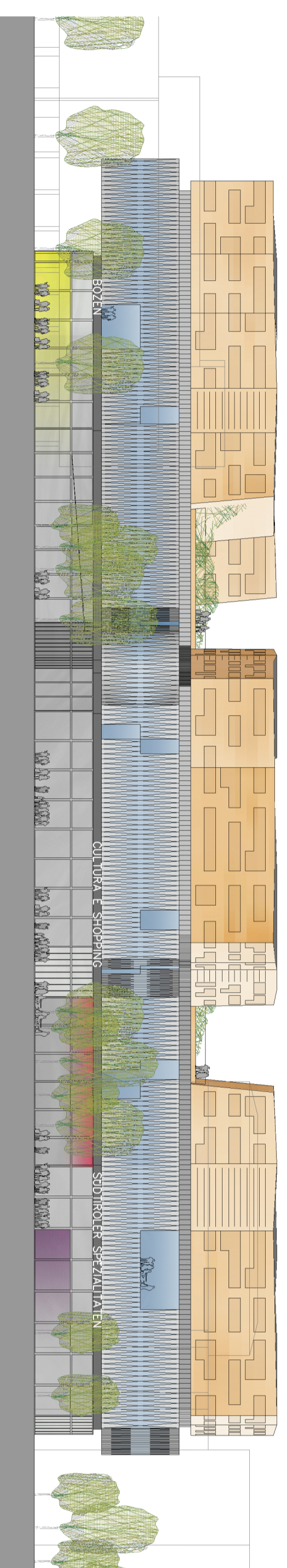
Schnitt DD
Sezione DD



Ansicht Nord
Prospetto Nord



Ansicht Süd
Prospetto Süd



Ansicht West
Prospetto Ovest



PROGETTO EFFICIENZA ENERGETICA

Energytech Ingenieure G.m.b.H.
 Negrelli Strasse 13b
 I - 39100 Bozen
 Tel. 0471/054040 Fax. 0471/054041
 www.energytech.it E-Mail: info@energytech.it



PLANINHALT / CONTENUTO

Prospetti e sezioni architettoniche

MASSTAB / SCALA 1 : 500

DATUM / DATA 09/09/2014



PLAN NR. / TAVOLA N. **5.1.2L**
 QUALITA' ENERGETICA **Cap. III**

PIANO DI RIQUALIFICAZIONE URBANISTICA NEL COMPARTO VIA ALTO ADIGE, PERATHONER,
 STAZIONE E GARIBOLDI AI SENSI DELL'ART. 59 QUINQUAGESIMA DELLA L.P. N. 13/1997 E SS.I.M.M.